



## Cat.6A Patch Cords

R&Mfreenet Cat.6A patch cords are used for connecting the network equipment to patch panels and telecommunications outlets. They are suitable for frequencies of up to 500 MHz.

## Features of Cat.6A Patch Cord

- Fulfills the requirements of Category 6A, Class EA (500MHz) according to the present standard of the ISO/IEC 11801.
- Complies with the Category 6A specifications of the IEC 60603-7-41 / IEC 60603-7-51 components standard with the Cat.6A connection module.
- Supports PoE (IEEE 802.3af), PoEP (IEEE 802.3at), 4Ppoe (IEEE 802.3bt) and is compatible to IEC 60512-99-001/002.
- The flexible cable meets the extended TCL specification of level 2 according to IEC 61156-6 for frequencies above 100 MHz.
- Tested according to IEC 61935-2
- Each individual patch cord is tested.
- Can also be used as Cat.5e or Cat.6 (backwards compatible).
- Colour coding for service identification.
- Ultra stable strain relief.
- Strain relief according to TIA/EIA-568-B.1-1.
- Slim jack dimensions: 41.1 x 11.7 x 6.6mm (length x width x depth).
- Lengths from 0.5 to 20m available.
- Impedance of 100Ω.
- LSZH and LSFRZH versions.
- R&M security system.
- R&M environment system.
- 3P certified (in channel)



## Cat.6A Patch Cords Data Sheet

### Materials

Plug Housing	Contacts	Contact Plating	Shielding
UL 94-V0 polycarbonate	Bronze (CuSn6)	0,7 µm selective gold plate	Tin-plated brass

### Electrical Characteristics

General	Current Rating	Dielectric Withstanding Voltage	Insulation Resistance @20°C 500VDC
Compliant to 60603-7	1.5A @ 25°C	1000 VDC	5000 MΩ * km

### Mechanical Characteristics

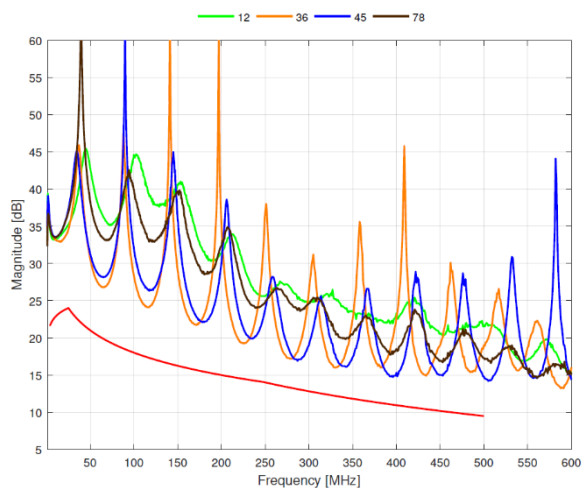
Plug Tolerances and Dimensions	Operating Temperature
Compliant to IEC 60603-7	-20°C to +60°C

### Environmental Characteristics

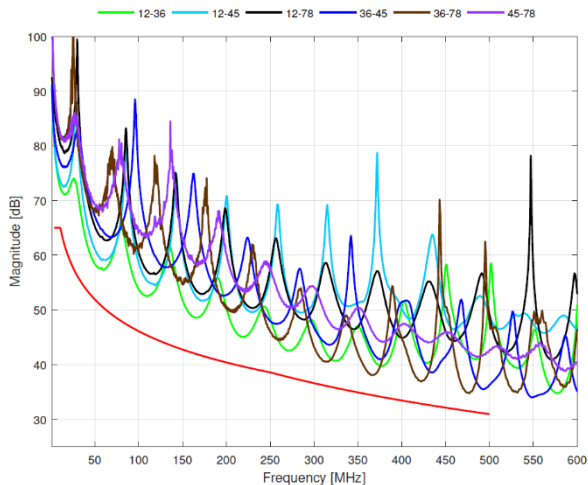
## Patch Cord Characteristics Cat.6A

	U/UTP	S/FTP
Inner conductor diameter	AWG26/7	AWG26/7; AWG26/1
Number of pairs	4	4
Screen per pair	None	AL/ Foil
Outer screen	None	Cu-braid
Jacket	LSZH	LSFRZH; LSZH
Bending radius	≥35mm operation (without load) ≥60mm installation (with load)	≥35mm operation (without load) ≥60mm installation (with load)
Outer diameter	max. 6.0 mm	max. 6.0 mm

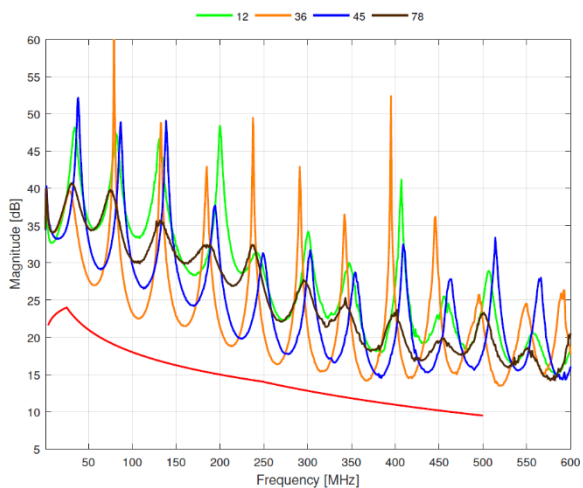
Typical Return Loss Cat.6A U/UTP patch cord 2m



Typical NEXT Cat. 6A U/UTP patch cord 2m



Typical Return Loss Cat. 6A S/FTP patch cord 2m



Typical NEXT Cat. 6A S/FTP patch cord 2m

