



Cat.5e Patch Cords

R&Mfreenet Cat.5e patch cords are used for connecting the network equipment to patch panels and telecommunications outlets. They are suitable for frequencies of up to 100 MHz.

Features of Cat.5e Patch Cord

- Fulfills the requirements of Category 5e, Class D (100MHz) according to the present standard of the ISO/IEC 11801.
- Complies with the Category 5e specifications of the IEC 60603-7-2 / IEC 60603-7-3 components standard with the Cat.5e connection module.
- Supports PoE (IEEE 802.3af), PoEP (IEEE 802.3at), 4Ppoe (IEEE 802.3bt) and is compatible to IEC 60512-99-001/002.
- Tested according to IEC 61935-2
- Each individual patch cord is tested.
- Colour coding for service identification.
- Ultra stable strain relief.
- Strain relief according to TIA/EIA-568-B.1-1.
- Slim jack dimensions: 41.1 x 11.7 x 6.6mm (length x width x depth).
- Lengths from 0.5 to 20m available.
- Impedance of 100Ω.
- PVC and LSFRZH versions.
- R&M security system.
- R&M environment system.
- 3P certified (in channel)



Cat.5e Patch Cords Data Sheet

Materials

| Plug Housing | Contacts | Contact Plating | Shielding |
|------------------------|----------------|-----------------------------|------------------|
| UL 94-V0 polycarbonate | Bronze (CuSn6) | 0,7 µm selective gold plate | Tin-plated brass |

Electrical Characteristics

| General | Current Rating | Dielectric Withstanding Voltage | Insulation Resistance @20°C 500VDC |
|----------------------|----------------|---------------------------------|------------------------------------|
| Compliant to 60603-7 | 1.5A @ 25°C | 1000 VDC | ≥2000 MΩ * km |

Mechanical Characteristics

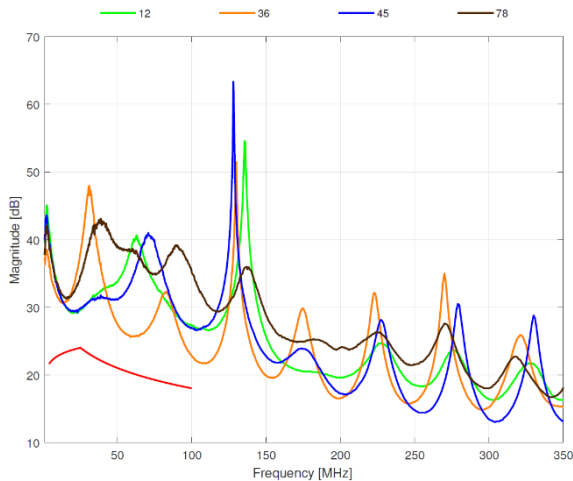
| Plug Tolerances and Dimensions | Operating Temperature |
|--------------------------------|-----------------------|
| Compliant to IEC 60603-7 | -20°C to +60°C |

Environmental Characteristics

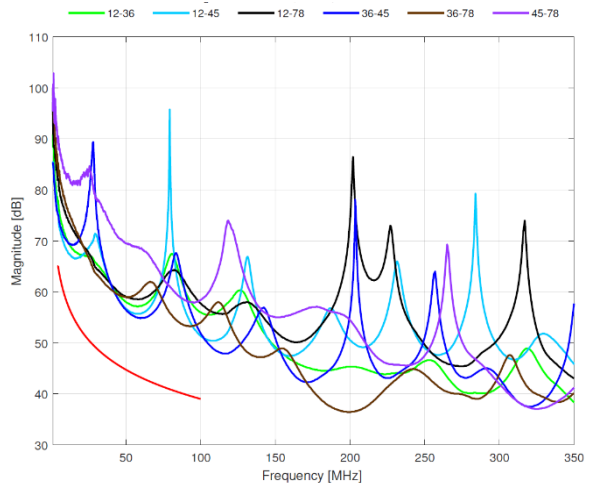
Patch Cord Characteristics Cat.5e

| | U/UTP | SF/UTP |
|--------------------------|--|--|
| Inner conductor diameter | AWG26/7 | AWG26/7 |
| Number of pairs | 4 | 4 |
| Screen per pair | None | None |
| Outer screen | None | Braid + AL foil |
| Jacket | PVC or LSZH | LSZH or LSFRZH |
| Bending radius | ≥35mm operation (without load) ≥60mm installation (with load) | ≥25mm operation (without load) ≥50mm installation (with load) |
| Outer diameter | max. 6.0 mm | max. 5.8 mm |

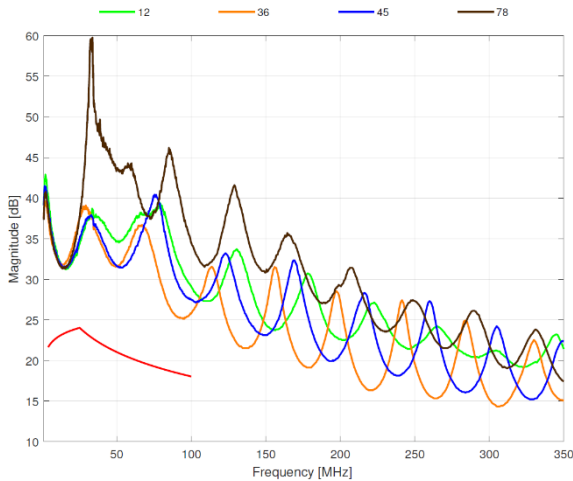
Typical Return Loss Cat.5e U/UTP patch cord 2m



Typical NEXT Cat.5e U/UTP patch cord 2m



Typical Return Loss Cat.5e SF/UTP patch cord 2m



Typical NEXT Cat.5e SF/UTP patch cord 2m

