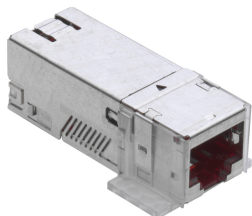


## Product information

### Connection Module Cat. 6A, 1xRJ45/s, 100x

R509505  
977030815  
100 Pcs.



The module for the highest standards, guarantees the best performance in the 10 Gigabit Ethernet cabling.

- RJ45 Cat. 6A ISO connection module, shielded
- Mounting plate
- EMC cover
- Dust cover
- Cable tie
- Installation instructions

090.5360 / similar product

## Description

The R&Mfreenet Cat. 6A shielded connection modules, part of the Advanced cabling system, are ideal for voice, fast data transmissions and high bandwidth applications. This high-performance Cat. 6A module is perfect for use in 10 Gigabit Ethernet (10GBASE-T) and future high-speed applications to 500 MHz.

## Technical Data



DESCRIPTION [UNIT]	VALUE/VALUE RANGE
Standard	UL Listed IEC 60603-7: Electrical Characteristics of the Telecommunication Outlets ISO/IEC 11801 ed. 2.2: June 2011 EN 50173-1: May 2011
Protection class IP	IP 20
PoE	Yes
Connector class	connection module
Shielding connector (A)	shielded
Connector type (A)	RJ45
Category connector (A)	Cat. 6 <sub>A</sub> ISO
Holder for connector / module	Mounting plate
Wiring diagram	TIA-568A / TIA-568B
Poles	8

## Mechanical Data

DESCRIPTION [UNIT]	VALUE/VALUE RANGE
Color	silver / red
Material	plastic: PC, UL 94 V-0

RJ45 connection module of Cat. 6A ISO, for the setting up of transmission channels of Class EA with up to 4 plugged connections acc. to ISO/IEC 11801 ed. 2.2, June 2011, EN 50173-1 May 2011 (DIN EN 50173-1) and Class F on 2 pairs, complies with Cat. 6A requirements of the standards ISO/IEC 11801 ed. 2.2, June 2011, EN 50173-1 May 2011, as well the U.S. standard Cat. 6A according to TIA 568-C.2, re-embedded tested in acc. with IEC

60603-7-51 and 60512-27-100, interoperable and backwards compatible with Category 6 and Category 5e. Suitable for 10GBASE-T applications in acc. with IEEE 802.3™ Section Four up to 500 MHz and 100 m. Tested in line with R&M's manufacturing control, performing 100% inspection. Compatible with RJ standard plugs (RJ11, RJ12, RJ45), connection with automatic wire cutting of installation cables AWG 26 – 22 (0.4 mm – 0.65 mm) and flexible cables AWG 26/7 – AWG 22/7 without special tools. X-Separator for individual pair shielding. Parallel pair termination without crossover in acc. with TIA 568-A/B, gold-plated bronze contacts for >1000 mating cycles, IDC contacts with >20 insertion cycles, contact resistance <5 mOhm, dielectric strength >1000 Veff. PoE and PoE+ compatible according to IEC 60512-99-001. 90° wire orientation without bending cable. With integral cable strain relief, including dust cover. Shield contacting by patented shield lance with integral cable strain relief, shield material tin-coated bronze, ground contacting through 1 contact finger for flat connectors 4.8 x 0.5 mm. Material: halogen-free and heavy-metal free in acc. with EU directives RoHS 2. Connection module Cat. 6A ISO, shielded, with EMC cover, dust cover, mounting plate, cable tie and installation instructions.

	Description	PU	Product No.
	Termination Tool Cat. 6 <sub>A</sub>	1 Pcs.	R516050
	Cable Preparation Tool Cat. 6 <sub>A</sub>	1 Pcs.	R804325